

N.E.1/4 OF N.E 1/4 OF  
SECTION 4, T.6N., R.1W., S.L.B. & M.

TAXING UNIT: 03.10

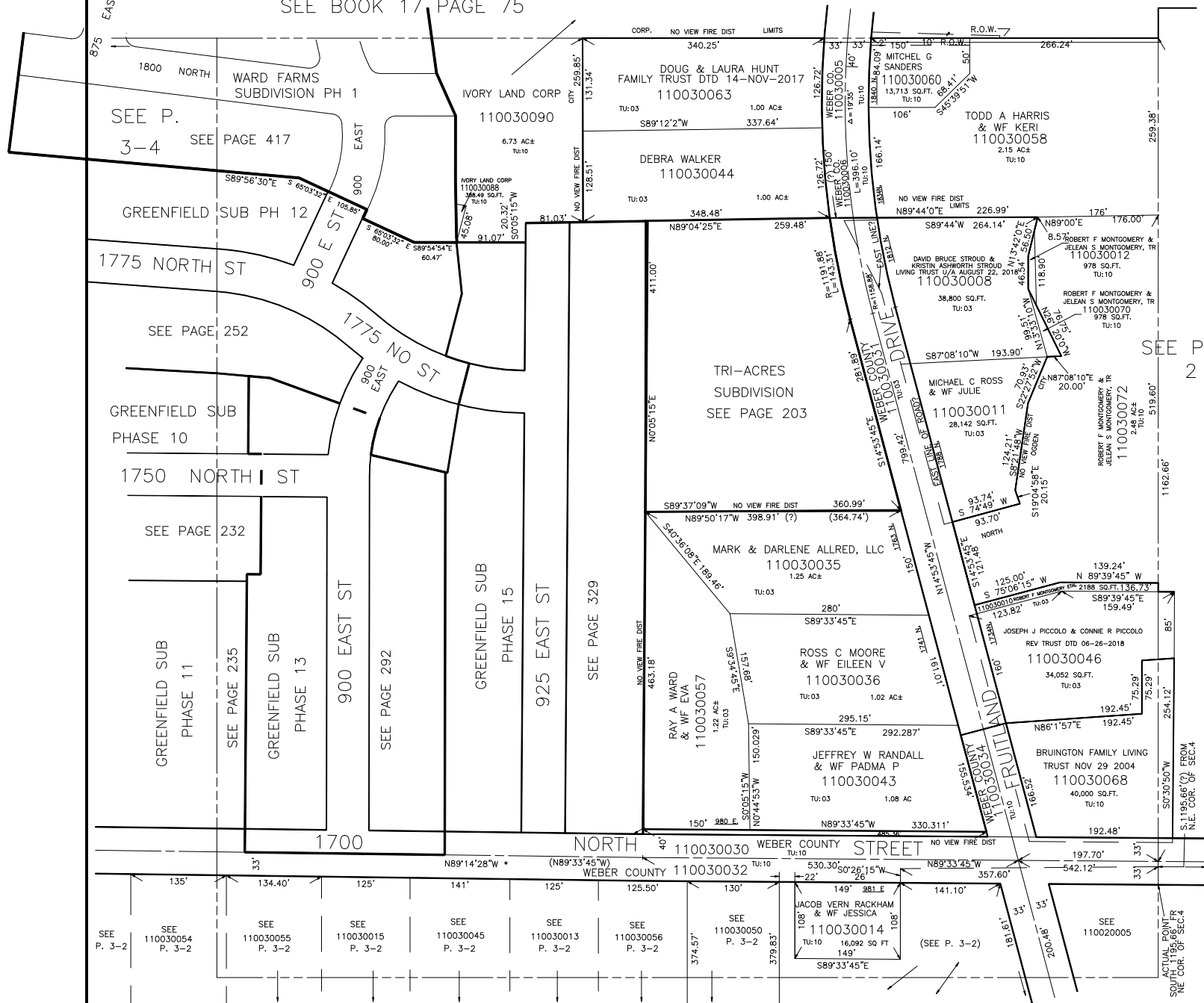
IN NORTH OGDEN CITY & WEBER COUNTY

PREFIX: 11-003

ALSO SEE PAGES 3-2,3,4

SCALE 1" = 100'

SEE BOOK 17 PAGE 75



SEE P. 3-4 SEE PAGE 417

GREENFIELD SUB PH 12

1775 NORTH ST

SEE PAGE 252

GREENFIELD SUB PHASE 10

1750 NORTH ST

SEE PAGE 232

GREENFIELD SUB PHASE 11  
SEE PAGE 235

GREENFIELD SUB PHASE 13  
SEE PAGE 292

900 EAST ST

GREENFIELD SUB PHASE 15  
925 EAST ST

SEE PAGE 329

SEE P. 3-2

SEE 110030054 P. 3-2

SEE 110030055 P. 3-2

SEE 110030015 P. 3-2

SEE 110030045 P. 3-2

SEE 110030013 P. 3-2

SEE 110030056 P. 3-2

SEE 110030050 P. 3-2

SEE 110030014 (SEE P. 3-2)

SEE 110020005

NOTE : DATA FOR MOUNTAIN ROAD & FRUITLAND DRIVE TAKEN FROM COUNTY SURVEYOR'S MAPS, MAR. 1963

SEE P. 3-2

\* 1700 N. ST. ALIGNMENT 40-12 27-JUN-95